

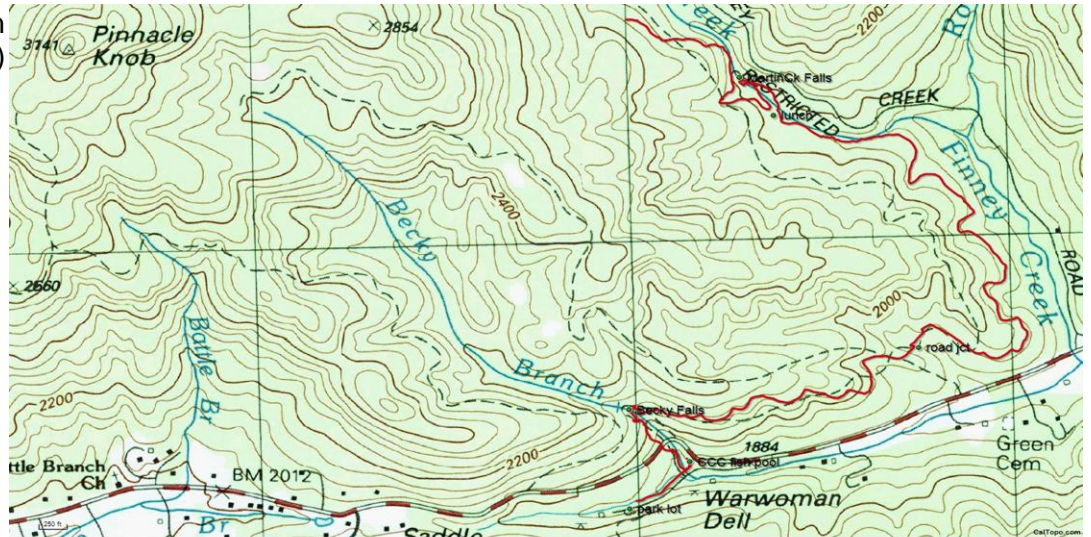
MARTIN CREEK and FALLS via Bartram Trail in Chattahoochee National Forest, GA



DESCRIPTION: This 5 mile, mostly moderate hike was added to our catalog in 2013. It offers two nice falls, a bold stream with several bridges, and a rockery. From the trail head in Warwoman Dell Picnic Area, near old CCC trout basins, hike up to Warwoman Road.. A small sign shows where the Bartram Trail crosses the road. Note the Bartram Trail Historical Marker. Cross the road (carefully). An old spring house on the left signals a bridge and viewing station for Becky Branch Falls. Save that as a reward for completing the primary hike. Instead, continue east, uphill, generally paralleling the stream, 1.8 miles to Martin Creek Falls. It's a series of falls with the largest dropping 30 feet. For more exercise, but little additional scenery, continue beyond...further uphill toward 3000ft high knobs. Elevation gain to the falls is only about 500ft. Have lunch there. Return on the outbound route. View Becky Branch Falls near the finish. It's 20ft tall and viewed close up. Nice finish to a nice hike..

DIRECTIONS (GPS: 34.883044, -83.346147)

Meet, pool, and depart as usual from KKEPA at 830A and/or Walhalla at 9A. From Walhalla, go 6 miles NW on SC28, then 5 mi W (left) on Whetstone, then W (left again) 6 miles on Chattooga Ridge, then N (right) 6 miles on US76 to the US441 junction in Clayton. Just a block or two to the right is Rickman Road (Warwoman). Take it east for 2.8 miles. A very sharp right onto gravel for 0.2 miles accesses the Warwoman Dell picnic area. Park there. No facilities. No fees. Expect to return about 330P



UPDATED Jul 2017

