

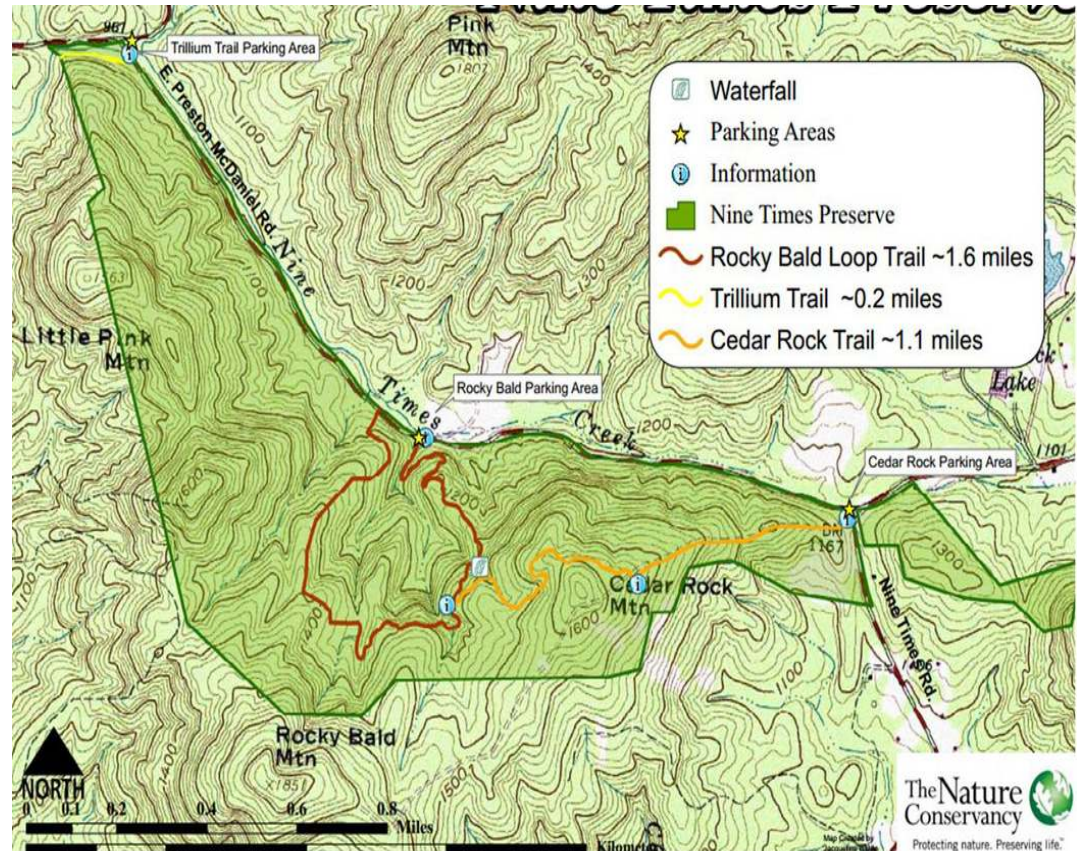
NINE TIMES NINE TIMES PRESERVE TRAIL to CEDAR ROCK MOUNTAIN, SC



DESCRIPTION: Start at the parking lot at E. Preston McDaniel and Nine Times Rd. Head west on the Cedar Rock trail, climbing steadily uphill for about a half mile to the crest. In another half mile the trail joins the Rocky Bald Loop . Proceed clockwise. There are good winter/early spring views along the upper trails ... especially of Pickens County to the south. Once the trees leaf out, the views mostly disappear. Complete the loop, with a short connection along EPMcD, and return via Cedar Rock. Total mileage is about 4.5 including exploration of the rocky bald near the top. The trails are well marked except for the spur to the bald. Before, or after, do the 0.2 mile Trillium Trail at the north end of EPMcD that engages the Little Eastatoee Creek. Lunch at finish or add-on stop at Long Shoals.

DIRECTIONS (GPS: 34.948613, -82.792052)

All assemble at KKEPA at 9A or meet at the trailhead at 930A. Go N on SC130 2.3 miles, bear right onto Nimmon's Bridge Rd, continue 4.8mi, turn right on Swallowford Rd, go 1 then left on Fall Creek Rd. Continue 0.9 to SC11 then turn right and go 7 mi and turn right onto Eastatoee Creek Rd. Continue 0.5mi and take the 2nd right onto Mountain Grove Church/E Preston McDaniel Rd on to the parking area at the corner of Nine Times. No fees or facilities. Expect to return by 2PM.



UPDATED Jul 2017