

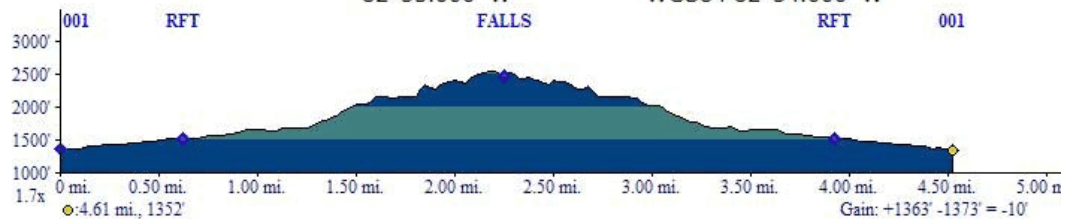
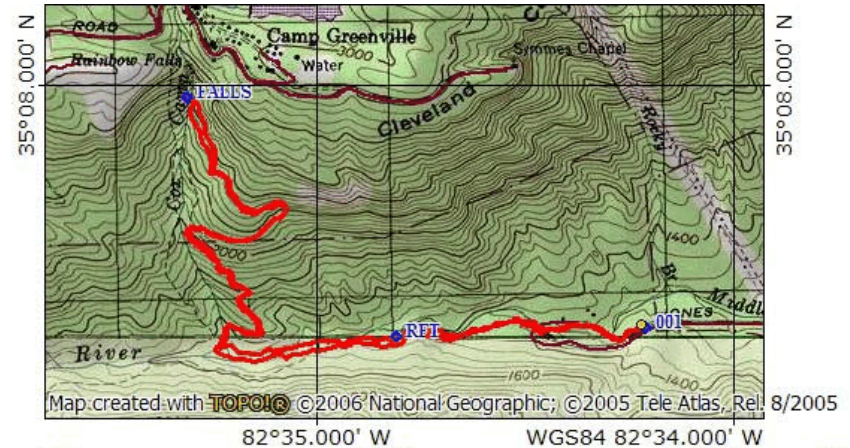
# RAINBOW JGSP RAINBOW TRAIL & FALLS in JONES GAP STATE PARK



**DESCRIPTION:** Not to be confused with Rainbow Falls on Horsepasture River in Gorges State Park, this is a more narrow but, equally dazzling, 90ft falls that flows from Cox Camp Creek. Surrounded by dramatic rockeries, it is accessible for close up viewing and is a fine venue for lunch. It is accessed by a 2.5 mile hike (each way) over easy and difficult terrain including 1200 ft of elevation gain. Starting from the Jones Gap visitor center, cross the bold, beautiful Middle Saluda River and head upstream on the Jones Gap Trail. At about 0.75 miles, take the red blazed trail, which crosses Cox Camp Creek on several bridges. Somewhat rocky underfoot, but mostly easy to this point, the trail then climbs more steeply, along impressive rock outcrops, on up to the falls. Switch backs moderate the climb.

**DIRECTIONS:** (35.127183, -82.649097)  
 Gather at Holly Springs (SC11 & US178) for a 915A departure. This requires leaving KKEPA by 830A. Some go directly to Holly Springs. From Holly, head east on Rte 11, 14.8 miles to River Falls Rd (F Mart on corner) then go north (left) about 6 miles to JGSP. Park fee is \$5 per hiker; free for car and passengers with a SC Park Pass. Facilities at the park visitor center.

Expect to return about 3PM.



UPDATED Oct 2017