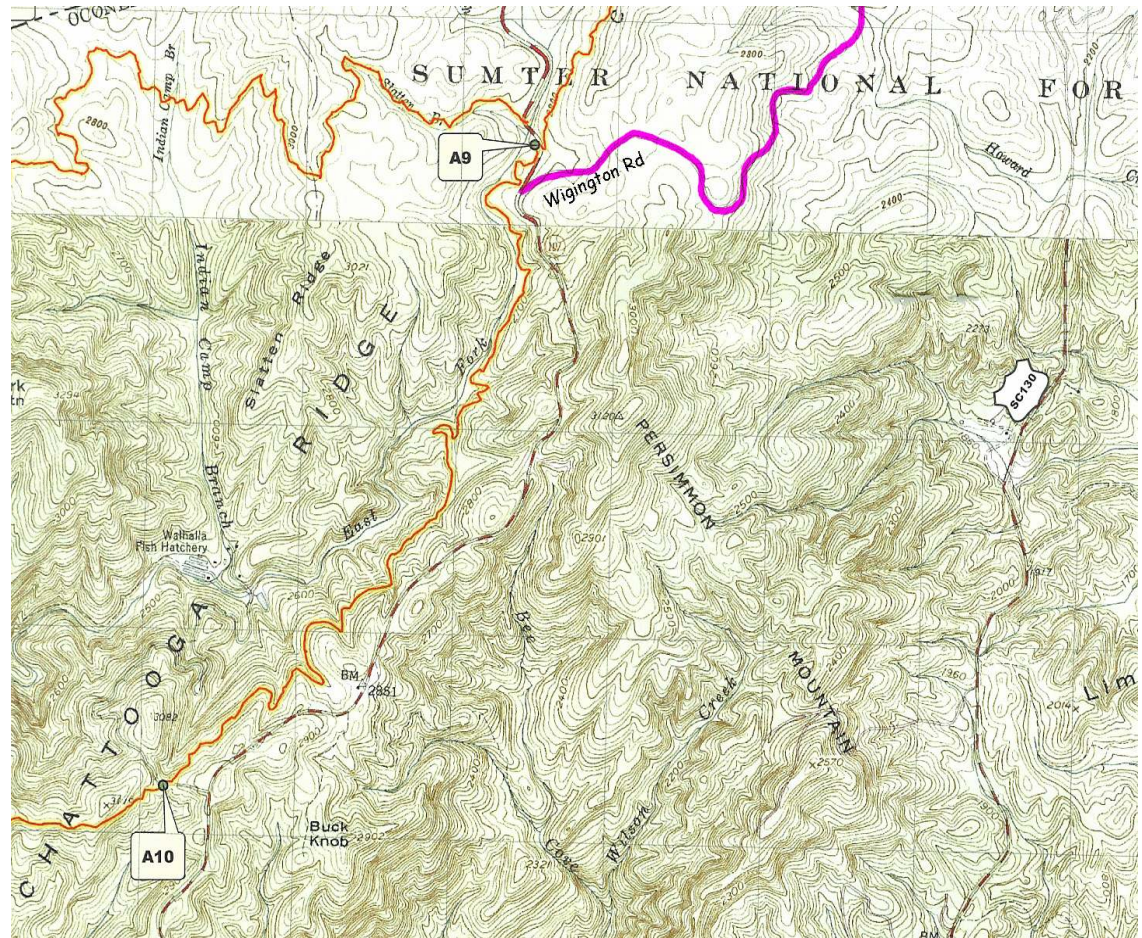


# SLOAN HATCHERY SPBA to FISH HATCHERY RD and RETURN via FOOTHILLS TRAIL (FT)



DESCRIPTION: This is a pleasant, easy, 3.3 mile each way hike between Sloan Bridge Picnic Area (SBPA) and Fish Hatchery Road via the Foothills Trail FT (A9..A10). From Sloan, the trail descends gently about 200ft to its lowest point, then regains 400...again gently... up to Hatchery Rd. Noteworthy are a rock wall and a small, tall waterfall at about one mile; and a large, curiously shaped tree at mile two. SBPA has served as a venue for "Feast in the Forest" gatherings, or for lunch after completing the full, both ways, hike..

DIRECTIONS: (GPS: 35.003481, -83.054139)  
Both Keowee Key and Walhalla groups head out separately at 830AM and go direct to the Sloan Bridge Picnic Area (on SC107 just north of the Wigington Rd intersect) for a 915A departure from there. From Walhalla go 8 miles NW on SC28, 12mi N on SC107 to the parking and trail head on the left. From KKEPA go 18.4 miles N on SC130, then NW 2.2 mi on Wigington Rd, then right 0.2mi to the trailhead. SBPA has potties; no fees for parking. Expect return by 2PM.



UPDATED Jul 2017