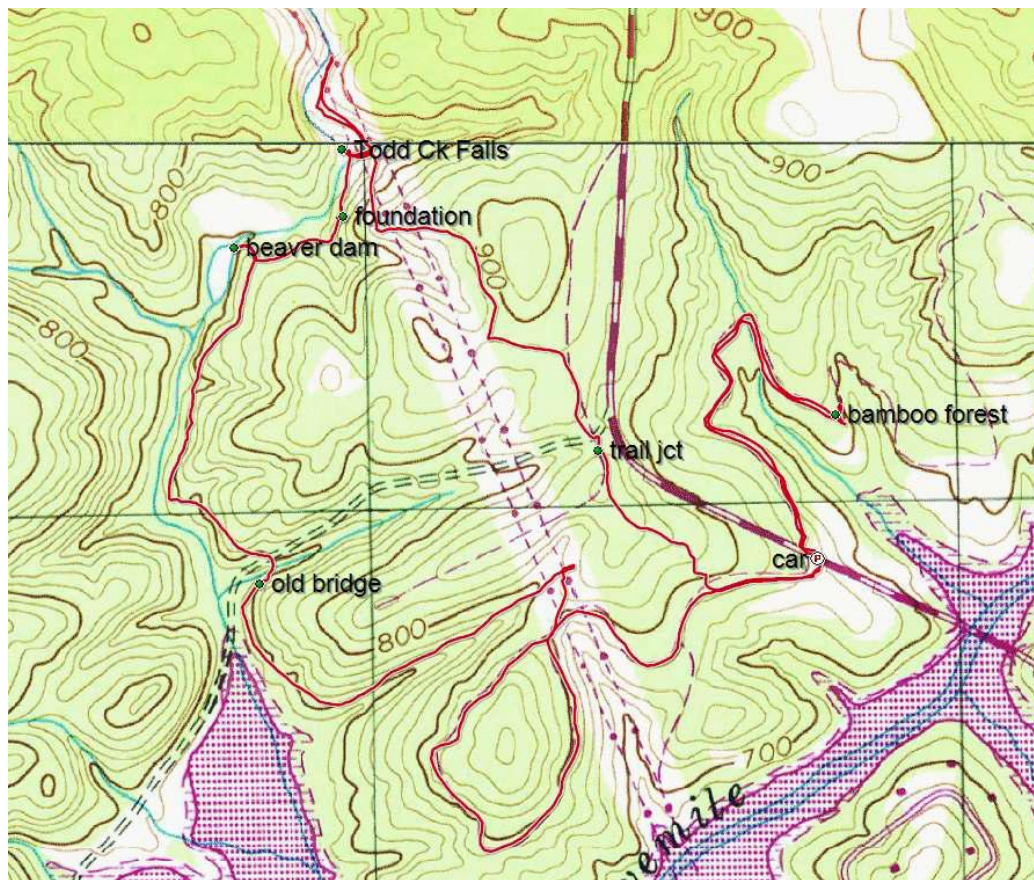


TODD CREEK TODD CREEK FALLS in Clemson Experimental Forest near Six Mile



DIRECTIONS

GPS: (34.7437, -82.8050)

ALL meet, pool, and depart KKEPA at 9AM. From KKEPA drive 2.2mi S on SC130, 1.6mi E on SC183, 3.5 S on Jones Mill, 0.4 E on Pleasnat Hill Church, 2 SE on Brookbend, and 0.9 S on Maws Bridge. Park on the right below the gate. No fees and no facilities. Expect to return by 2PM

DESCRIPTION: Often hiked as “quicky” for “iffy” weather, Todd Creek is close by, four or five miles with just a few hundred ft of climbs. Though not tall, the falls are picturesque...bold and wide, cascading to a pool below. Begin by heading west, on the dirt road beyond the parking area and gate. Within a quarter mile, head uphill on the 2nd small path to the right. Continue north, generally paralleling Maws Br Rd, intersecting and connecting with forest roads. Keep right at the junction about a half mile in. Note when the power lines and towers become visible to the left, but continue on to the next intersect. Enter the power line clearing and follow the path downhill between the first two towers. The falls should be visible to the north. Explore the falls and upstream, then return past the falls. Keep right, and follow Todd Creek by an old mill pond and spillway. Note this area is subject to flooding. Follow the trail generally south then east to Lake Hartwell, then back up to the towers. Loop, full circle, to the west, then head back to the parking.. A pleasant companion stroll to a mature bamboo forest (a half mile in), is available just across Maw’s Bridge Rd. For a longer hike, continue beyond the bamboo. Have lunch at the falls by doing the bamboo first.

UPDATED Aug 2017